

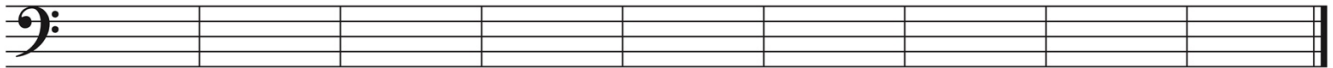
MUS 200
MAJOR DIATONIC CHORDS ASSIGNMENT
Do this on paper (with pencil) or electronically

This assignment has two parts.

Part 1:

Notate the following asked-for chords in the key of Bb major. Do not use a key signature, but make sure to include any/all accidentals for the chords. Notate all chords as whole notes in root position.

Above the staff, write each chord's chord symbol.



Bb: I V vi7 iii IV I ii7 vii^o I

Part 2:

The following page has excerpts from chord charts (lyrics & chords) for two songs, "Purple Rain" by Prince, and "Both Sides Now" by Joni Mitchell. Each has been modified and simplified as compared to the original for the sake of this assignment.

For each excerpt, do the following:

- List the triad chord symbols and roman numerals for the song's key, like this list for the key of C major:

C	Dm	Em	F	G	Am	Bdim
I	ii	iii	IV	V	vi	vii ^o

- Next to each chord symbol in the song, write-in the chord's roman numeral. If you do not have enough room, write the numeral off to the side and use an arrow to show which chord it applies to.
- Compare the endings of each song's chorus in terms of the numerals. What consistency do you notice and what is your perceived effect of these chord combinations? Write your answer in the space below.

PURPLE RAIN (Prince) - Key of A major

List the chord symbols and roman numerals for the key of A major below:

[Verse 1]

A I never meant to cause you any sorrow F#m
E I never meant to cause you any pain D
A I only want one time to see you laughing F#m
E I only want to see you laughing in the purple rain A

[Chorus]

Purple rain, purple rain D
Purple rain, purple rain A F#m
Purple rain, purple rain E
E I only want to see you bathing in the Purple Rain A

Source: <https://tabs.ultimate-guitar.com/tab/prince/purple-rain-chords-413679>

=====

BOTH SIDES NOW (Joni Mitchell) - Key of G major

List the chord symbols and roman numerals for the key of G major below:

[Verse 1]

G Am C G
Rows and floes of angel hair
G Gmaj7 C G
And ice cream castles in the air
G C Am
And feather canyons everywhere
Am7 D
I've looked at clouds that way
G Am C G
But now they only block the sun
G Gmaj7 C G
They rain and snow on everyone
G C Am
So many things I would have done
Am7 D
But clouds got in my way

[Chorus 1]

G C G
I've looked at clouds from both sides now
C G C G
From up and down, and still somehow
Bm C G
It's cloud illusions I recall
C D D7 G
I really don't know clouds at all

Source: <https://tabs.ultimate-guitar.com/tab/joni-mitchell/both-sides-now-chords-1140752>