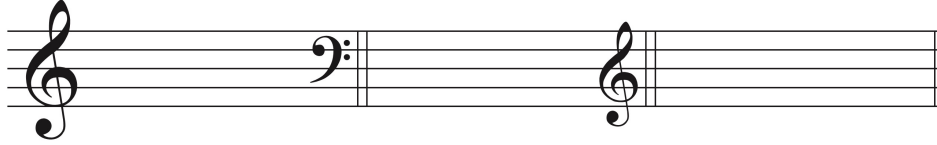


MUSIC 233, CHAPTER 16 HOMEWORK SUPPLEMENT

Notate each secondary dominant in the specified inversion. Include key signatures and mind the clefs.



d: V^7/iv

B: V^6/V

c: V^4_3/VI

For each problem:

1. Analyze the given secondary dominant chord.
2. Notate (and analyze) a chord that smoothly leads into (precedes) the given chord. There are multiple options – a chord a P5 above the root of the secondary dominant will usually work.
3. Resolve the given secondary dominant chord (smoothly). Make sure any 7ths resolve appropriately. In the third problem, the resolved-to chord is already given.
4. Make sure to analyze all chords with roman numerals.
5. Put lead-sheet symbols above all chords (including slash symbols for inversions).

f: _____

Bb: _____

G: _____

$\underline{V^6_5/V}$