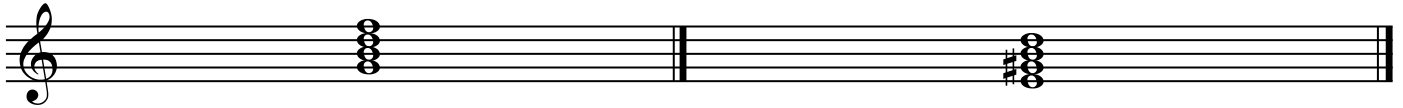


Dominant 7th chords

Of all the seventh chords, the most common is the one built off of the dominant tone of the scale: the V7. In the key of C major, it would be a G7 chord. In the key of A minor, it would be an E7 chord. In any minor key, the V7 requires its 3rd to be raised a half step, which utilizes the raised 7th scale degree found in the harmonic minor mode.



The V7 in the key of C major.

The V7 in the key of A minor.
Notice that the 3rd of the chord is raised a half step to make the bottom triad major; a reflection of the harmonic minor mode.

Using key signatures, write the V7 chords for the indicated key (mind your clefs):



C min

A maj

E min

G min

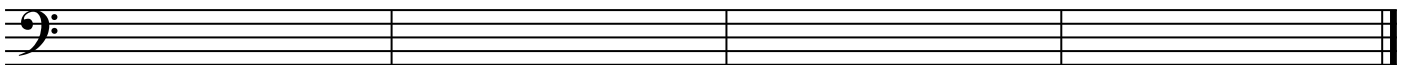


F maj

B maj

B \flat maj

B \flat min



D min

D maj

E \flat min

A \flat maj