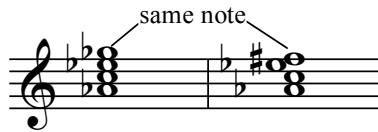


MUS 233 Enharmonic Reinterpretation

Interpreting a sonority in a different key:

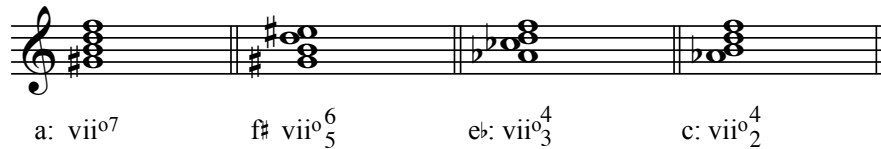
- $V^7 = \text{Ger}+6$
- $\text{vii}^{o7} = \text{vii}^{o7}$ in another key (in a different inversion)
- Augmented triad (see *Further Elements*)

$V^7 = \text{Ger}+6$:



$\text{vii}^{o7} = \text{vii}^{o7}$ in another key (in a different inversion):

D \flat : V^7 ----> C: Ger^+



Enharmonic Modula.....

- Enharmonic reinterpretation = common chord
- Spelling is not important (written in either 1st or 2nd key)
- Chord is heard as functioning in either key (as usual for common chord modulation)

vii^{o7} in enharmonic modulation:



C: vii^{o7} I a: vii^{o6}_5 i^6



C: I V6 I V^7/IV V
 [E: $\text{Ger}+6$]