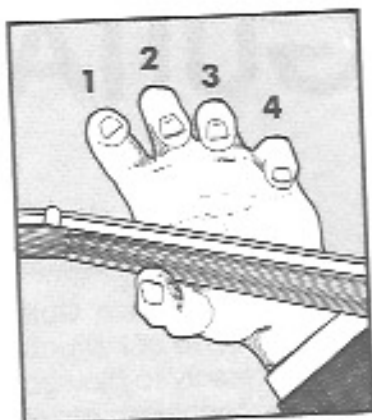


HOW TO HOLD THE GUITAR & PICK

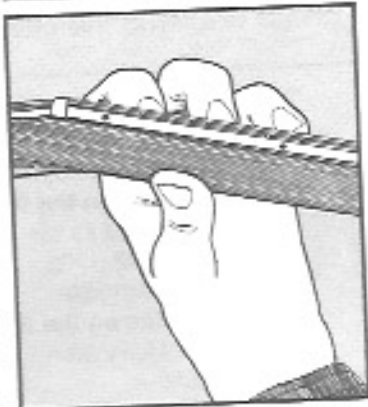


The correct way to hold the guitar.

#1



#2



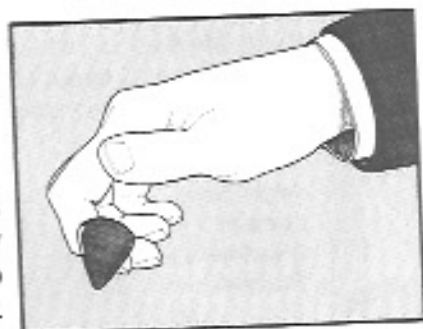
Place your fingers
FIRMLY on the strings
DIRECTLY BEHIND
THE FRETS.

#1



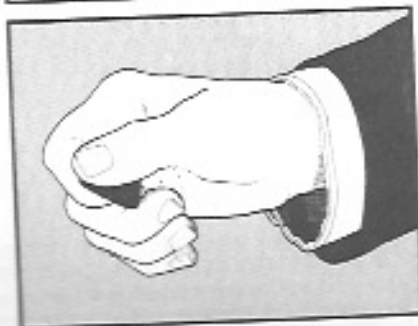
This is the pick.

#2



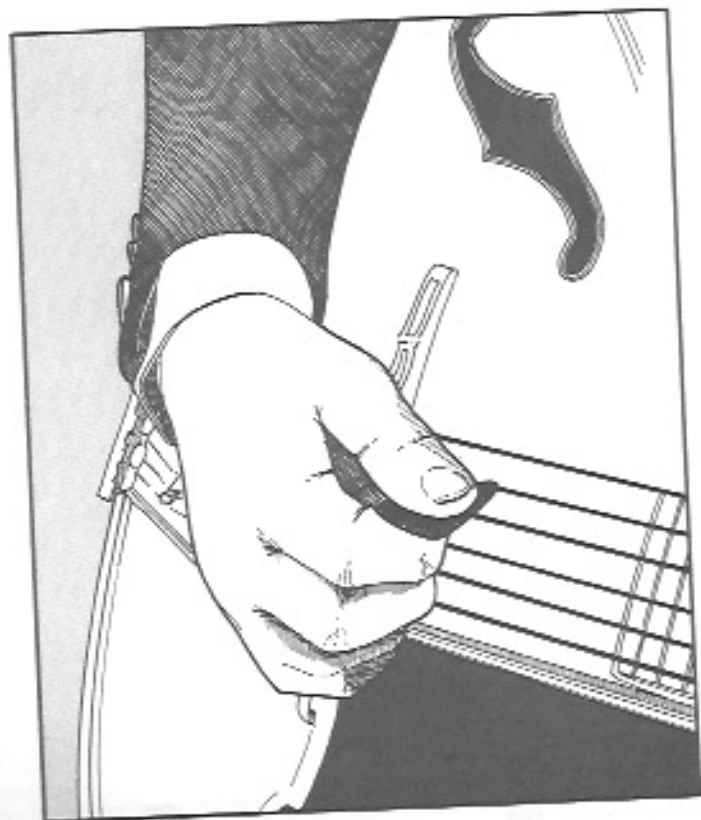
Hold it in this
manner firmly
between the thumb
and first finger.

#3



#4

☐ = DOWN STROKE OF THE PICK.



TUNING THE GUITAR

The six open strings of the guitar will be of the same pitch as the six notes shown in the illustration of the piano keyboard. Note that five of the strings are below the middle C of the piano keyboard.

PIANO NOTATION

GUITAR NOTATION

6TH 5TH 4TH 3RD 2ND 1ST

E A D G B E

ANOTHER METHOD OF TUNING

1. Tune the 6th string in unison with the E or 12th white key to the LEFT of MIDDLE C on the piano.
2. Place the finger behind the fifth fret of the 6th string. This will give you the tone or pitch of the 5th string (A).
3. Place finger behind the fifth fret of the 5th string to get the pitch of the 4th string (D).
4. Repeat same procedure to obtain the pitch of the 3rd string (G).
5. Place finger behind the fourth fret of the 3rd string to get the pitch of the 2nd string (B).
6. Place finger behind the fifth fret of the 2nd string to get the pitch of the 1st string (E).

6 5 4 3 2 1

E A D G B E

Frets

1

2

3

4

5

A D G B E

ELECTRONIC GUITAR TUNER

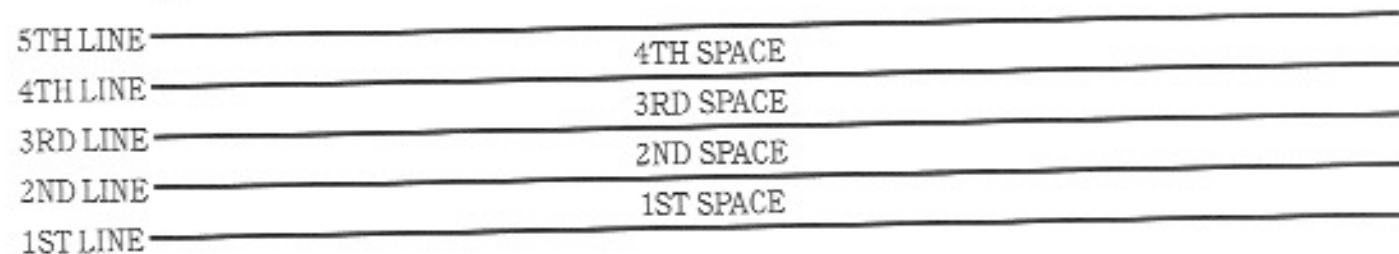


Electronic Guitar Tuners are available at your music store. They are a handy device and highly recommended.

THE RUDIMENTS OF MUSIC

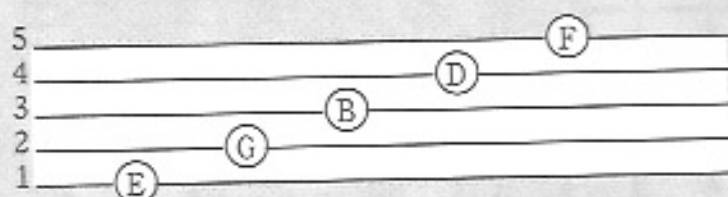
THE STAFF:

Music is written on a **STAFF** consisting of **FIVE LINES** and **FOUR SPACES**. The lines and spaces are numbered upward as shown:



The lines and spaces are named after letters of the alphabet.

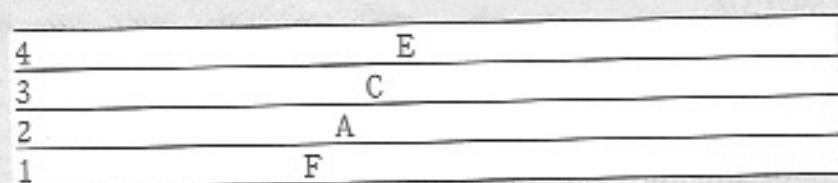
The **LINES** are named as follows:



Good Boy Does Fine

The letters can easily be remembered by the sentence—**Every**

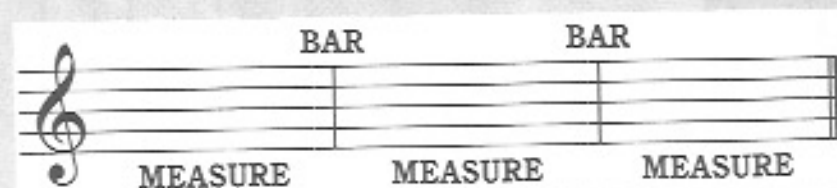
The letter-names of the **SPACES** are:



They spell the word **F-A-C-E**.

The musical alphabet has seven letters—**A B C D E F G**.

The **STAFF** is divided into measures by vertical lines called **BARS**.



DOUBLE BARS MARK THE END OF A SECTION OR STRAIN OF MUSIC.

THE CLEF:



This sign is the treble or G clef.

All guitar music will be written in this clef.



The second line of the treble clef is known as the G line. Many people call the treble clef the G clef because it circles around the G line.