

## Secondary Dominants and Leading Tone Chords Assignment

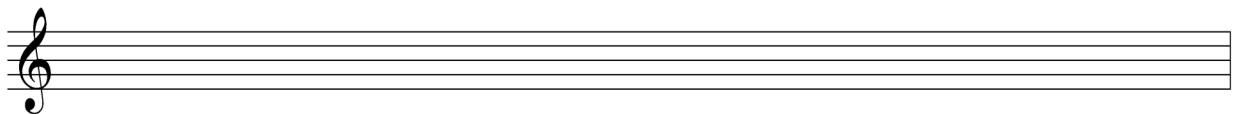
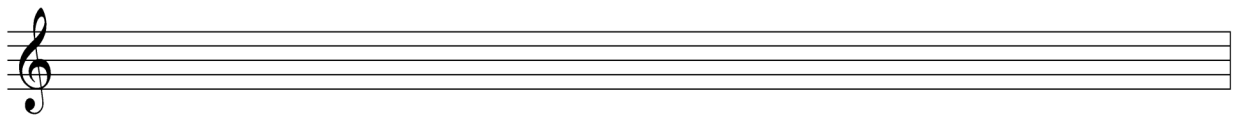
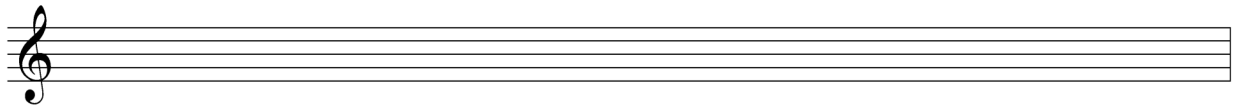


Using the above line as a guide, compose a simple melody on the staves below in the key of C Major or A minor that can be harmonized (in places) with secondary dominant or leading tone chords. You may change the rhythm of the above line as much as you want and also insert other notes in between the given notes.

You will just be notating a melody line below, so beneath it write in the appropriate chord symbols AND roman numeral symbols for each chord you choose. You do not need to fill in all staves; write as much or as little as you want according to the note values you choose for your melody.

Suggested approach:

1. Choose what chord or chords could harmonize each note above and list those chords by the note. Remember that if you choose a secondary chord, it should resolve to a specific chord, so make sure that chord will fit in as well.
  - Note: each chromatic note will be either the 3<sup>rd</sup> of a secondary dominant or the root of a secondary leading tone chord.
2. Compose the melody as you see fit, maintaining the placement of the pre-determined secondary chords. Remember to write the chord symbol and roman numeral beneath the appropriate melody note.



*Use a separate piece of staff paper if you want.*